



www.hackneyservice.com

ES-1000 MODEL
Hackney Performer Service Body



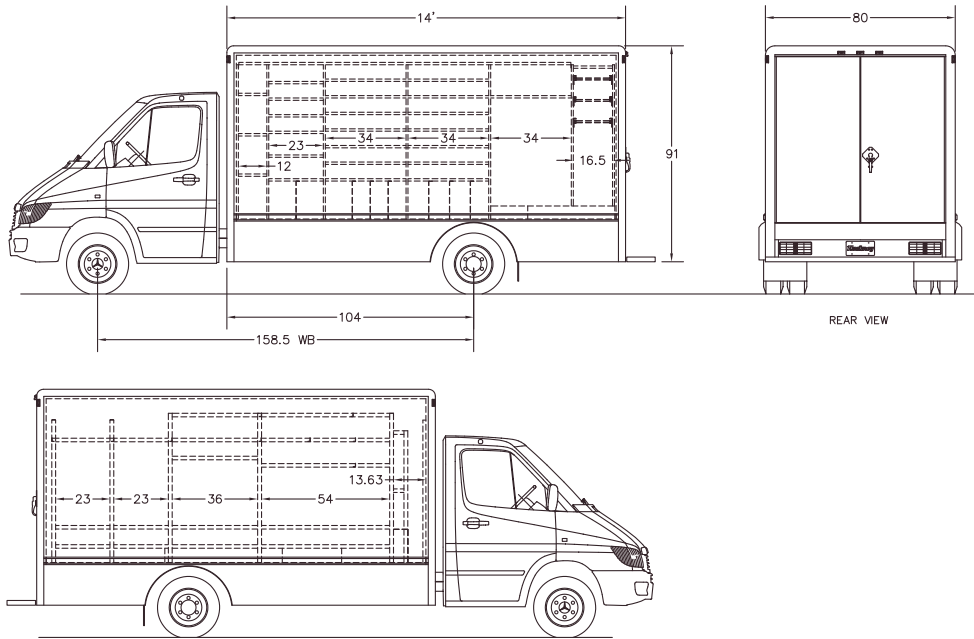
Amp Up Business

ES-1000: YOUR PERFECT ELECTRICAL SERVICE VEHICLE At-your-fingertips equipment and inventory with Hackney's proven shelving system make electrical contractors more time-efficient and competitive. Fluorescent light tubes store easily. Keep your specialized ladders safely locked inside. Shelf trays hold supplies and parts you need, plus there's storage for power tools, drop cords, wire rolls and much more.

Call today: 1-800-763-0700

FAST FACTS

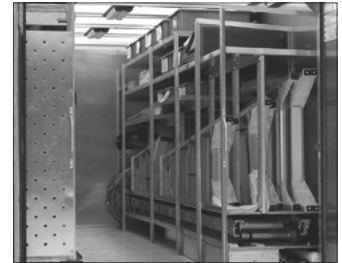
- ▶ Stand-up headroom (72")
- ▶ Three interior dome lights
- ▶ Full width doors swing out – continuous stainless hinges
- ▶ Spring rod door retainers to hold doors 90 degrees out
- ▶ Heavy-duty deadbolt lock assembly with deluxe handle and push cylinder
- ▶ Racks hold four stepladders plus a 24-foot extension ladder
- ▶ Adjustable shelves on vertical tracks for parts and equipment
- ▶ Subdivided parts trays for inventory
- ▶ Wire spool holders, floor level roll wire racks, fluorescent tube holders, conduit and ground rod storage and floor mat storage
- ▶ Vertical tool rack for tools with long handles
- ▶ Technician's toolbox storage area
- ▶ Perforated tool hanging panel



ES-1000 Rear view



ES-1000 Driver's side shelving



ES-1000 Curb side shelving

Dimensions

- Width 80"
- Length 14'
- Headroom 72"
- Height from ground approximately 8'8" loaded
- Required Chassis Sprinter 3500 C (158" WB Dual rear wheels)
- Required Chassis GVWR 10,200 lb. minimum

Standard Equipment

Roof

Single wall aluminum

Floor

Aluminum interlocking panels with safety tread

Interior

Double wall front, rear doors, and rear side panels

Rear

Aluminum step type bumper with open safety grating - approximately 16" above ground
Mud flaps

Rear Door

Full width double swing-out - continuous stainless steel hinges.
77.5"H x 69.0"W - double wall aluminum
HD deadbolt lock assembly with deluxe handle and push cylinder
Spring rod door retainers to hold doors 90 degrees out

Interior Shelves

All aluminum infinitely adjustable on vertical tracks

- CS -25" depth; DS 18" depth; aisle width 33"
- Curb Side: Ladder storage for 24" extension plus 12', 8' 6', & 4' step ladders
- Drivers Side: Wire storage-spool rack for 8-12 rolls, vertical dividers for 10 rolls wire/cable
- Bin Storage - Adjustable shelves for more than 50 plastic parts trays
- Miscellaneous Self Storage - 20 lineal feet, tool panel, mat rack, space for tool cabinet, tools, drop cords, safety equipment, supplies, quick access items

Interior Lights

3 clear overhead dome lights with switch at rear and cab master

Paint

One color- white to match cab

Body Mounting

Separate cab & body - remountable design

Optional Equipment

Fluorescent Dome Lights (in lieu of three round)

Three double tube lights - 18"L 30 watt

Translucent Roof

Two Salem Roof Vents

4" x 9" two-way open and close

Back-up Alarm

Door Ajar Alarm / Pilot Light

D.O.T. Safety Kit

Includes 2.5# FE, triangle warning, flashlight

8" Eyeball Rearview Mirror

Located upper rear corner drivers side

Rear View Video Camera

Flat screen B&W monitor mounted at sun visor level

Plastic Storage Trays for ES Interior Layout

- Set of 66 plastic storage trays (includes dividers and label holders)
- 8 - 3.5"H x 11"W x 16"L with 8 large and 36 small dividers
- 47 - 5"H x 11"W x 16"L with 72 large and 120 small dividers
- 4 - 8"H x 11"W x 16"L with 4 large and 4 small dividers
- 7 - 8"H x 17"W x 22"L with 3 large and 12 small dividers

Box of 24 Assorted Brackets for Hanging Tools on Rear Doors

Hang tools such as wrenches, brooms, dust pans, shovels, hammers, tube benders, cutters, etc.

Stainless Steel Wheel Covers

Sprinter 16"

Paint Body or Cab Solid Color Other Than White Custom Paint Design Body or Cab Decals and Graphics Application

Price upon request